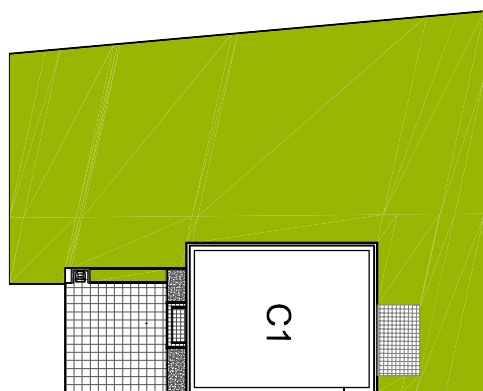
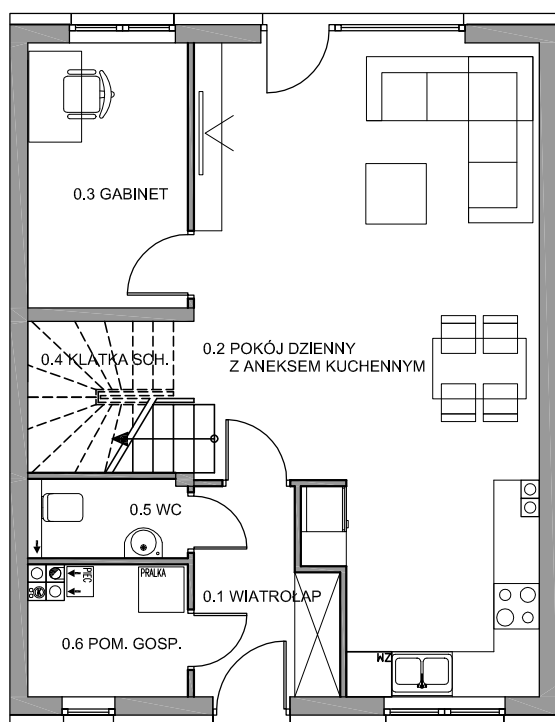


osiedle
LILIOWE

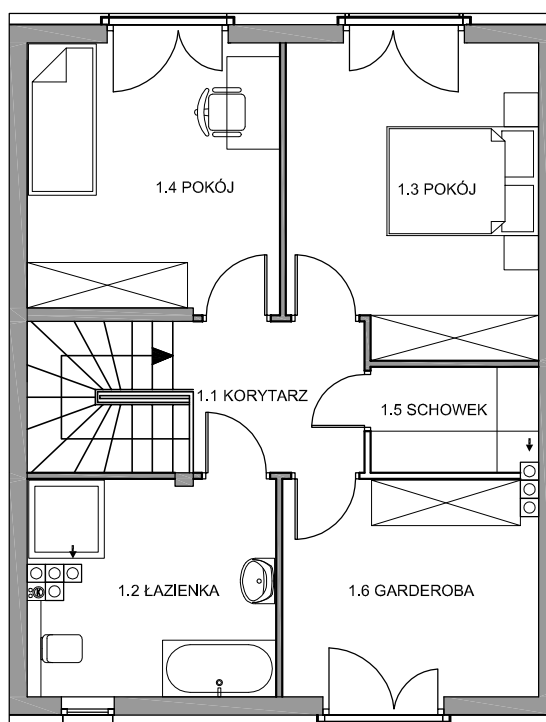


SEGMENT C1

DWUKONDYGNACYJNY Z OGRÓDKIEM
POWIERZCHNIA UŻYTKOWA - 107,34 m²
POWIERZCHNIA DZIAŁKI - 404,0 m²



| | |
|---------------------------------------|---------------------------|
| PARTER | |
| 0.1 wiatrołap | 4,57m ² |
| 0.2 pokój dzienny z aneksem kuchennym | 34,92m ² |
| 0.3 gabinet | 7,25m ² |
| 0.4 klatka schodowa | 4,40m ² |
| 0.5 wc | 2,11m ² |
| 0.6 pom. gospodarcze | 3,37m ² |
| razem PARTER | 56,62m² |



| | |
|---------------------|---------------------------|
| PIĘTRO | |
| 1.1 korytarz | 4,40m ² |
| 1.2 łazienka | 8,97m ² |
| 1.3 pokój | 13,15m ² |
| 1.4 pokój | 11,61m ² |
| 1.5 schowek | 3,00m ² |
| 1.6 garderoba | 9,59m ² |
| razem PIĘTRO | 50,72m² |